

10 Palmerston Avenue, Whalley Range, Manchester, M16 8JR



JP&Brimelow
ESTATE AGENTS

Offers In The Region Of £375,000

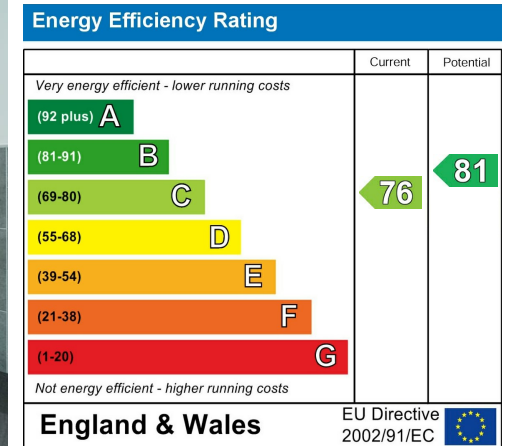
 4  1  2  C

VIDEO TOUR AVAILABLE A spacious and charming FOUR BEDROOM FOUR-BEDROOM period terraced home, tucked away just off Clarendon Road in the highly desirable Whalley Range. Arranged over three floors, this property offers generous living space. Ideally situated within walking distance of the shops and amenities on Clarendon Road, Manley Park, and excellent transport links including the Metrolink stations at Wilbraham Road (Chorlton) and Rye Bank Road (Firswood), providing direct access to the City Centre and MediaCity. The thoughtfully designed accommodation comprises an entrance hall, a front lounge with a box bay window, a separate dining room, and a spacious fitted kitchen/breakfast room with direct access to the enclosed rear garden, completing the ground floor. The first floor offers a three-piece family bathroom alongside two generously sized double bedrooms. A staircase then leads to the second floor, which is home to a further two well-proportioned bedrooms and a storage/office, completing the property. The property benefits from gas-fired central heating throughout and a private enclosed courtyard to the rear. Situated in Whalley Range, it offers convenient access to local amenities, schools, and parks, making it an excellent choice for families.



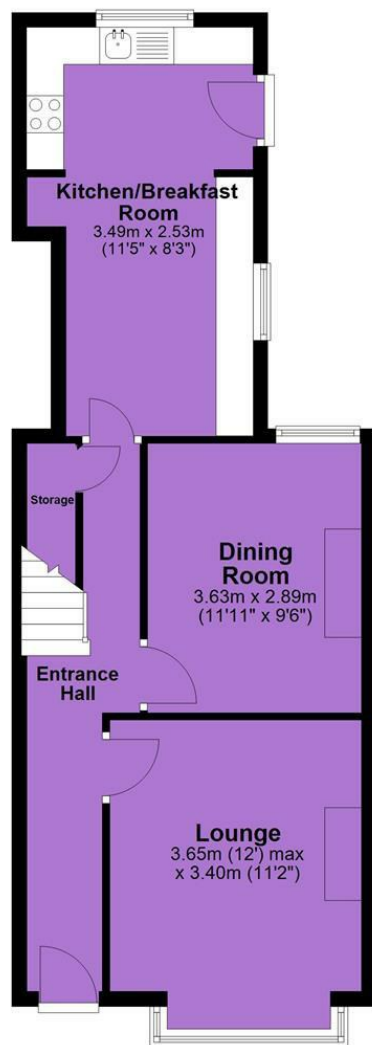


EPC Chart

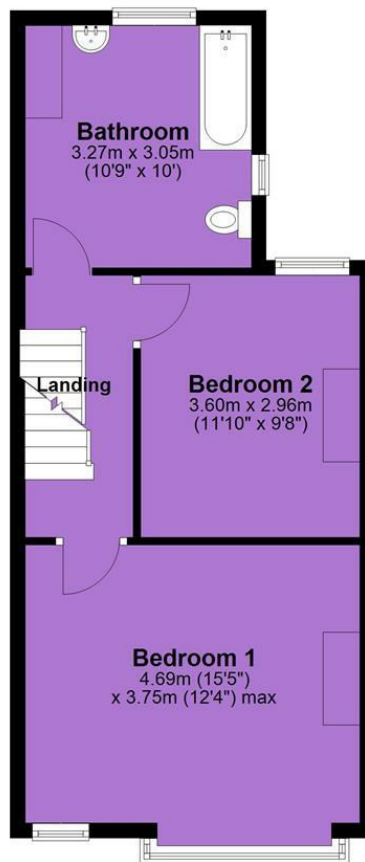


Tenure: **Freehold** Council Tax Band: **B**

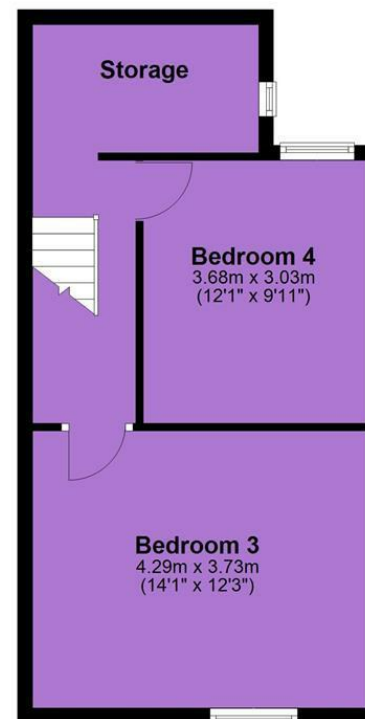
Ground Floor



First Floor



Second Floor



JP & Brimelow Estate Agents Ltd
430 Barlow Moor Road, Manchester, M21 8AD
Tel: 0161 8822233

E: sales@jpbrimelow.co.uk www.jpandbrimelow.co.uk



JP & Brimelow
ESTATE AGENTS

NOTICE: JP & Brimelow Estate Agents Ltd for themselves and for the vendors or lessors of this property whose agents they are give notice that:

- (i) the particulars are set out as a general outline only for the guidance of intending purchasers or lessees, and do not constitute, nor constitute part of, an offer or contract;
- (ii) all descriptions, dimensions, references to the condition and necessary permissions for use and occupation, and other details are given in good faith and are believed to be correct but any intending purchasers or tenants should not rely on them as statements or representations of fact but must satisfy themselves by inspection or otherwise as to the correctness of each of them;
- (iii) no person in the employment of JP & Brimelow Estate Agents Ltd has any authority to make or give any representation or warranty whatever in relation to this property.

jpandbrimelowestateagents

@jpandbrimelow